

Managing Domestic Programs: Eradication vs Suppression



Richard Johnson

USDA Animal and Plant Health Inspection Service

Eradication vs Suppression

- Biology:
 - Host range
 - Reproductive potential
 - What tools
- Economics:
 - Cost of the program
 - Value of the crop/natural resource

Emerald Ash Borer



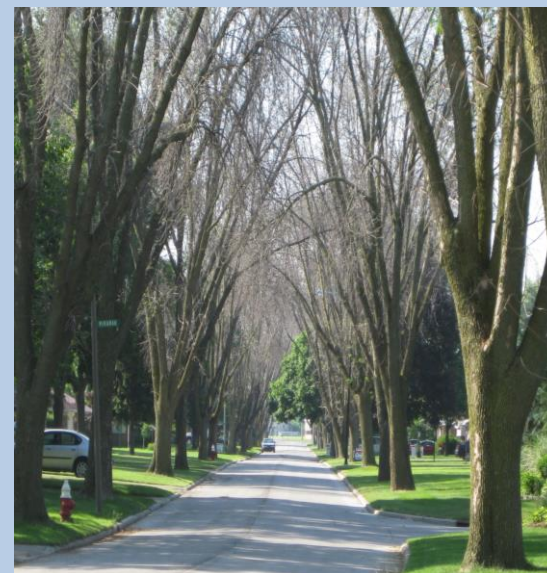
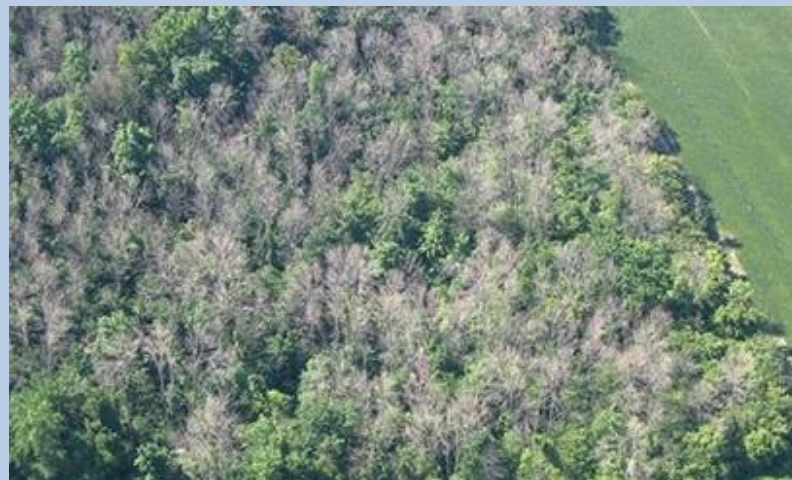
Host trees

- EAB – All 16 species of ash (*Fraxinus* spp.)
- Uses: Ornamental, forest, commercial
 - Tool handles, baseball bats, housing

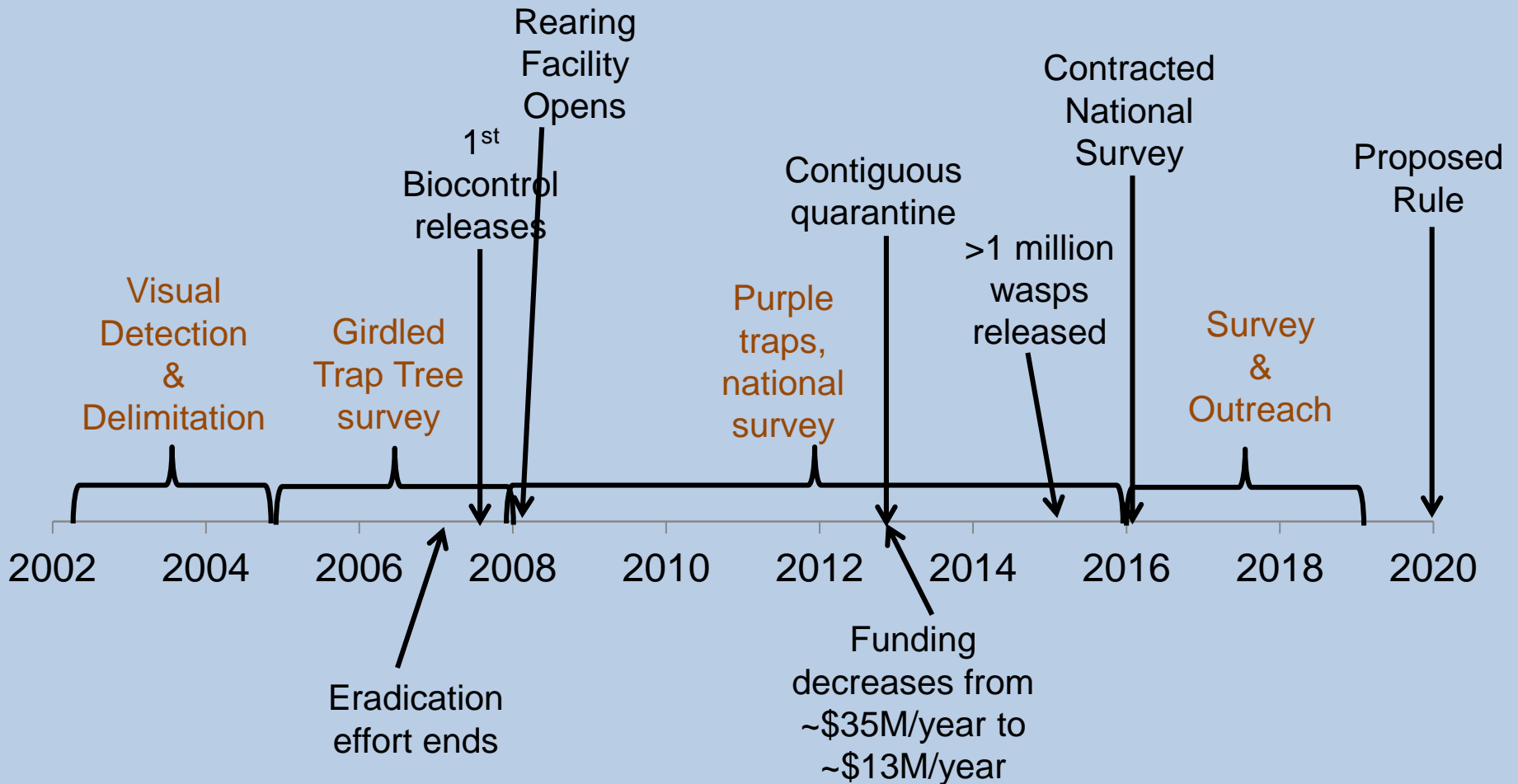


Economic Damage

- Tourism
- Industry
 - Timber
 - Nursery
 - Bats, Furniture
 - Baskets
- Suburban Trees
- Nursery stock industry
- Water Quality
- Air Quality



Timeline Of EAB Program



Suppression: Outreach & Biocontrol



- Focused on reporting the insect and tree damage to recognize the movement
- Don't move firewood to limit the natural spread

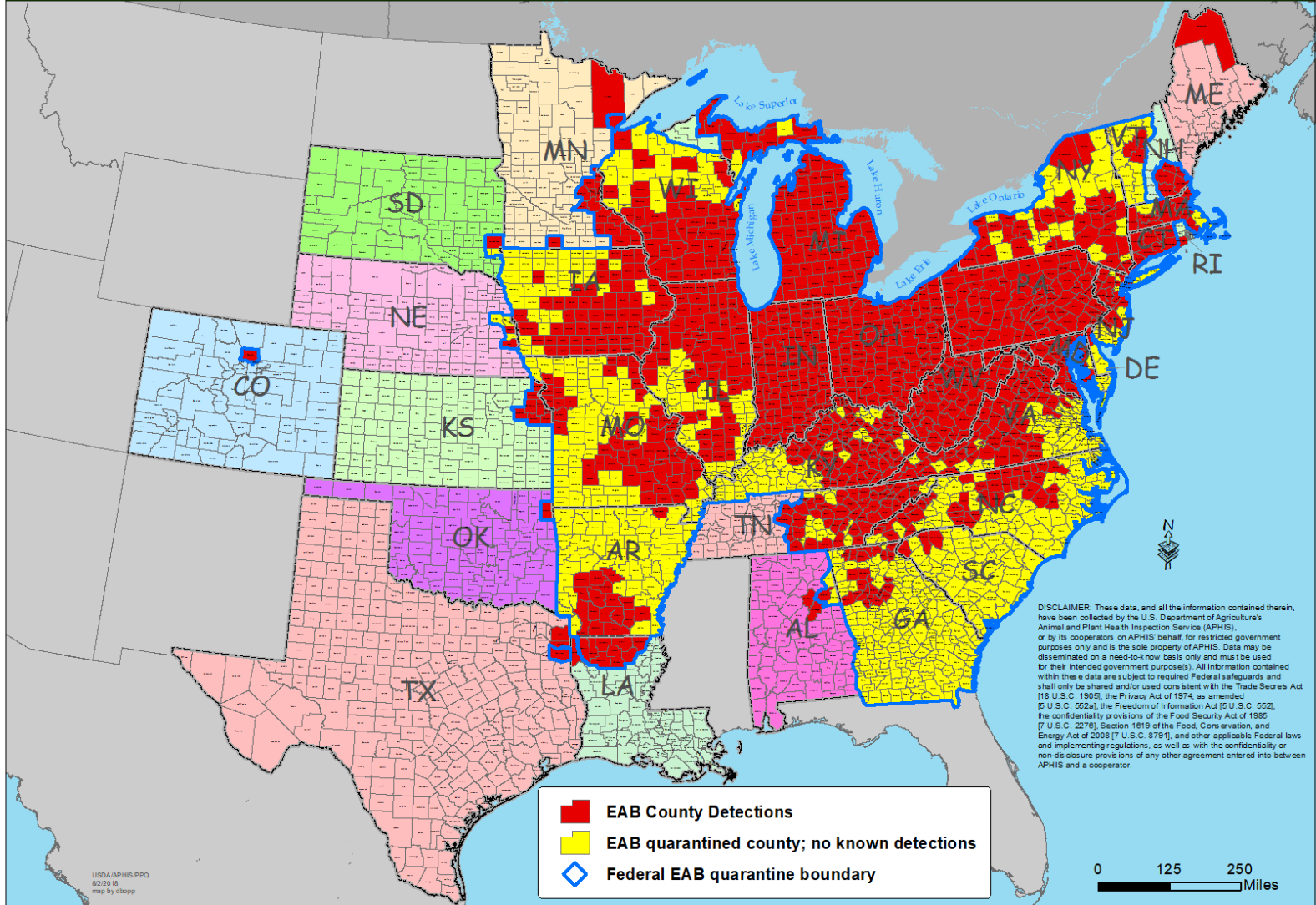
- Develop success biocontrol agents
- Distribute to affected areas
- EAB.Biocontrol.Program@usda.gov





Cooperative Emerald Ash Borer Project EAB County Detections with Federal Quarantine

August 2018



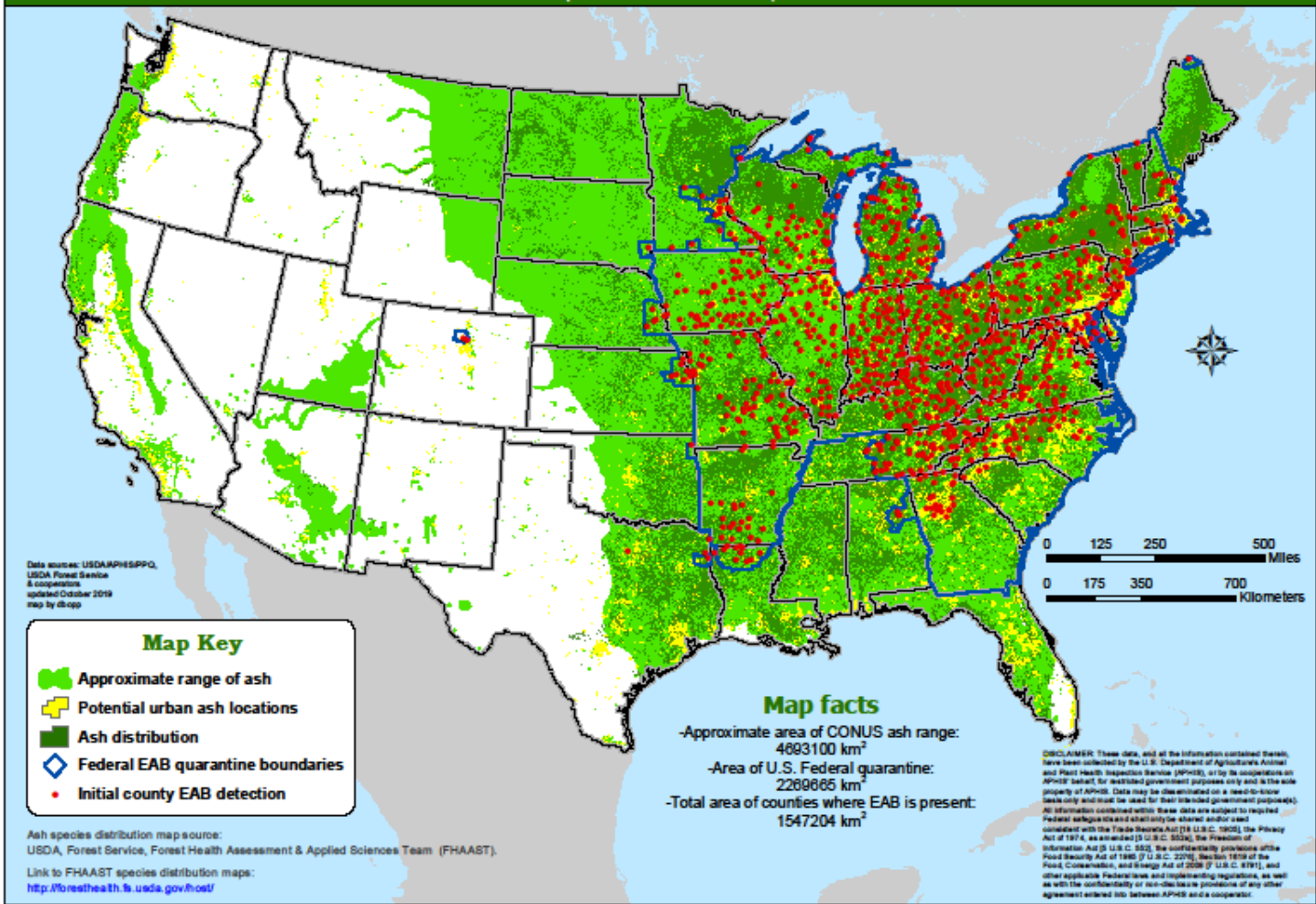


United States
Department of
Agriculture

Cooperative Emerald Ash Borer Project

Approximate range of ash species in the Contiguous U.S.
with EAB positives and Federal quarantines

October 1, 2019





EAB Proposed Rule

- Remove domestic quarantine
- Comment period ended November 19, 2018
- Proposed rule and comments: Federal eRulemaking Portal
- Status after rule: non-quarantine, but actionable @ ports



United States Department of Agriculture

Questions?

