



Netherlands Food and Consumer
Product Safety Authority
Ministry of Economic Affairs

Alternative Service Delivery

experiences in the Netherlands

Nico Horn

Senior Officer Plant Health
NPPO of the Netherlands



Alternative Service Delivery

1. Agricultural Inspection Agencies
2. ISPM 15 wood packaging material
3. Laboratories
4. Export certification
5. Plant passport in new EU legislation
6. Lessons learned



Netherlands Food and Consumer
Product Safety Authority
Ministry of Economic Affairs

NPPO

1. Agricultural Inspection Agencies (AIAs)



Horticultural crops



Seed potatoes
and arable crops



Flower bulbs



End products: fruits, vegetables,
cut flowers, wpm



Foundation of Agricultural Inspection Agencies



Major changes in tasks Agricultural Inspection Agencies



Creation of EU
internal market
Transfer of
plant passport
inspections

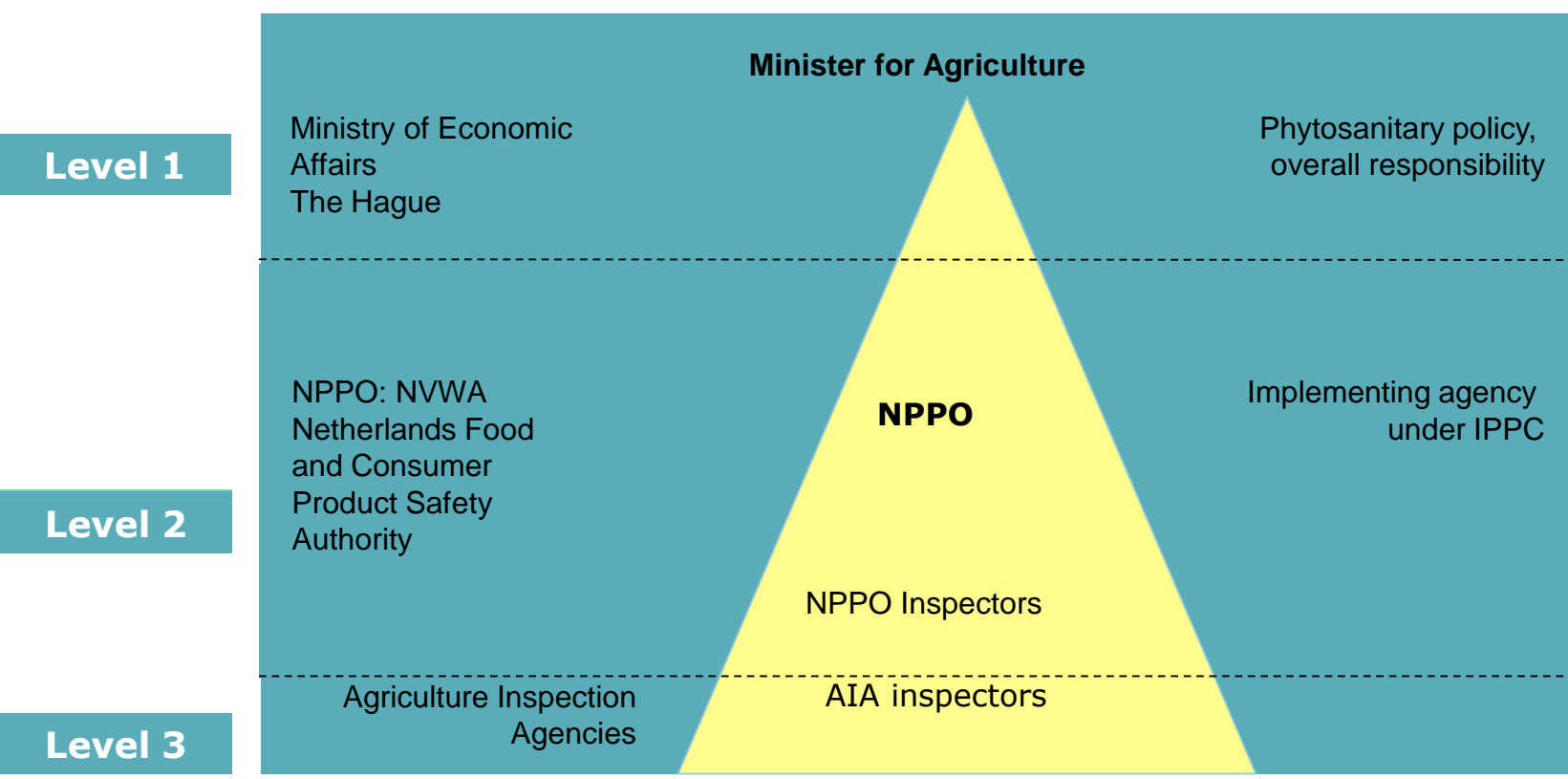


Reorganisation NPPO
Transfer of import
inspections

Export certification by NPPO officers



The Netherlands phytosanitary system





Background delegation of tasks to AIAs

- Changes to increase efficiency
- Better use of expertise of AIAs
- No double inspection visits
- For industry lower inspection fee
- Based on IPPC and ISPM 12 certificates issued only by NPPO officers
- NPPO gives instructions to AIAs
- NPPO audits AIAs
- Close collaboration NPPO - AIAs



2. ISPM 15 Wood Packaging Material

- Programme under responsibility NPPO
- Executed by SMHV
- Foundation Marking Wooden Packaging Material
- NPPO audits SMHV
- NPPO informs SMHV of changes
- SMHV informs industry
- SMHV works with 3 Certifying Agencies (CA)
- SMHV audits CAs
- Companies can register with CA
- Company audited by CA, in register SMHV



SMHV

stichting markering houten verpakkingen

www.smhv.nl

[home](#)

[register](#)

[faq](#)

[about smhv](#)

[contact](#)

[downloads](#)

Is your wooden packaging in compliance with ISPM 15?

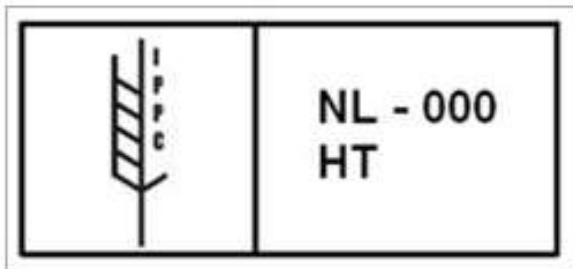
Is your wooden packaging in compliance with ISPM 15? More and more countries demand that the wooden packaging of imported goods comply with ISPM 15. In the case that wood and wooden packaging are not in compliance with ISPM 15, they can be retained at the border, sent back or destroyed by the country involved. Therefore take no risks and acquire ISPM 15 treated wood from a company registered at SMHV.

[→ read more](#)





IPPC mark for ISPM 15



Wood or wooden packaging which comply with ISPM 15 do not need a separate phytosanitary certificate. The IPPC-mark is the key to admittance to the country to which you are exporting. Wooden packaging carrying the IPPC mark, provide a guarantee that they meet the requirements of ISPM 15.

→ [read more](#)

Frequently asked questions

- [? How does the IPPC mark look like? >](#)
- [? How can I ensure that the supplier is allowed to use the IPPC mark? >](#)
- [? What are the risks using ISPM 15 non-compliant wooden packaging? >](#)

→ [all questions](#)

www.smhv.nl



Nederlandse Voedsel- en
Warenautoriteit
Ministerie van Economische Zaken



International Plant Protection Convention
Protecting the world's plant resources from pests



3. Laboratories

- Testing at approved laboratories
- Laboratories approved by NPPO/NRL
- Laboratories in other countries if approved nationally (including by APHIS)
- Protocols approved by NPPO/NRL
- Laboratories ISO 17025 accredited
- Laboratories audited by Board of Accreditation
- Laboratories audited by NPPO/NRL



4. Export requirements

- Database with export requirements available on our website
- Exporter can prepare consignment
- Check whether consignment complies
- Perform additional test if needed
- Have all underlying documents available
- Only then request final export inspection
- Exporter can print phytosanitary certificate
- NPPO officer checks and issues phytosanitary certificate



Export landenoverzicht

Exportlanden

[Exportprocedures](#)

A

- > [Afghanistan](#)
- > [Albanië](#)
- > [Algerije](#)
- > [Amerikaans Samoa](#)
- > [Andorra](#)
- > [Angola](#)
- > [Anguilla](#)
- > [Antigua en Barbuda](#)
- > [Argentinië](#)
- > [Armenië](#)

M

- > [Maagdeneilanden](#)
- > [Macao](#)
- > [Macedonië](#)
- > [Madagascar](#)
- > [Malawi](#)
- > [Maldiven](#)
- > [Maleisië](#)
- > [Mali](#)
- > [Malta](#)
- > [Marokko](#)

www.nvwa.nl



Fytosanitaire eisen

- > Aardappelen
- > Bloembollen
- > Groente en fruit
- > Groenteplanten
- > Plantuïen, sjalotten, knoflook
- > Sierteelt
- > Verpakkingshout
- > Zaaizaden
- > Diverse producten

Veterinaire eisen

- > Diervoeder
- > Levende have (dieren, eicellen, sperma, broedeieren)
- > Mest
- > Vis en visproducten

Argentinië

Argentinië stelt eisen aan de invoer van planten, plantaardige producten, dieren, dierlijke producten en levende producten. Op deze pagina vindt u de gegevens die bij de Nederlandse Voedsel- en Warenautoriteit (NVWA) bekend zijn.

Fytosanitaire eisen	Veterinaire eisen
Aardappelen	Diervoeder
Bloembollen	Levende have (dieren, eicellen, sperma, broedeieren)
Groente en fruit	Mest
Groenteplanten	Vis en visproducten
Plantuïen, sjalotten, knoflook	Vlees en vleesproducten
Sierteelt	Zuivel
Zaaizaden	Overige producten veterinair (eieren, huiden, honing, enzovoorts)

Meer over dit land

Landenoverzicht op de website Rijksdienst voor Ondernemend Nederland (RVO)

Vragen?

E: info@nvwa.nl

T: 0900-03 88 (dit informatienummer kost € 0.20 per gesprek, plus uw gebruikelijke belkosten)

www.nvwa.nl



Argentinië

ARGENTINIË (AR)	Certificaat export	Certificaat re-export	Taal	Grondeis	Invoervergunning
	1	20	S	V	ja

GROENTEN

Algemene eisen

Certificaat vereist voor:

alle groenten en fruit

Inspectie vereist voor:

Andijvie, Bospeen, Bosui, Breekpeen, Ijsbergsla, Knolselderij, Knolvenkel, Koolraap, Koolrabi, Kroot, Pastinaak, Prei, Radijs, Rettich, Schorseneer, Sjalotten, **Uien** en Slasoorten

Appel, Kersen, Paprika, Witlof

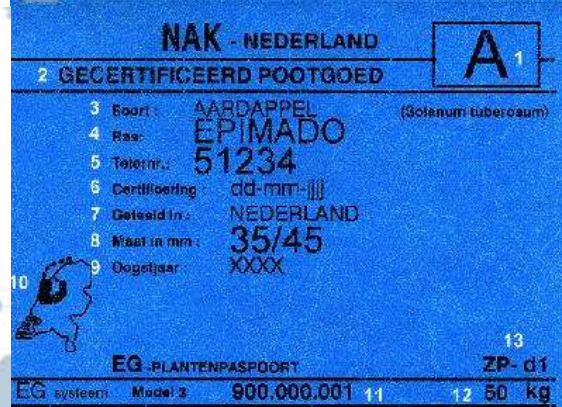
Product wat onder kwaliteitsinspectie valt.

www.nvwa.nl



5. Plant passport new EU legislation

- Currently: field inspection by NPPO
- New Legislation: possibility, field examination by grower, yearly audit by NPPO
- Grower examination can then be basis for issuance plant passport
- Only for internal trade within the EU
- Grower examination cannot be used for export certification





6. Lessons learned

- Use expertise present in other organisations
- Maintain expertise in NPPO
- Assign responsibilities clearly (no discussion needed on all details)
- Combine similar tasks efficiently
- Do not make it too complex, it has to be explained to trading partners
- IT systems are important to facilitate the procedures
- Remain responsible as NPPO



By delegating routine tasks,
the NPPO can focus on
specialized tasks

